

ANALYSIS FOR IMAGE RETRIEVAL OF TEXTURE ,COLOR AND SHAPE FEATURES

Amanbir Sandhu*

Aarti Kochhar**

ABSTRACT

Content- Based Image Retrieval(CBI is the important field of research.Content Based Image retrieval has gained much popularity in the past Content-based image retrieval (CBIR)[1] system has helped users to retrieve relevant images based on their contents. It represents low level features like texture ,color and shape .In this paper, we compare the several feature extraction techniques [5]i.e..GLCM ,Histogram and shape properties over color, texture and shape The experiments show the similarity between these features and also that the output obtained using this combination of color, texture and shape is better as obtaining output with a single feature.

KEYWORDS

Gray Level Cooccurrence Matrix(GLCM),Histogram,,Shape features, Precision, Recall, Accuracy

* Lecturer ,Rayat Bahra College Of Engineering & Nanotechnology For Women Hoshiarpur

** Assistant Professor,Dav Institute Of Engineering & Technology Jalandhar

1. INTRODUCTION

From times the images have been the mode of communication for human being. Now a days, we are able to generate, store, transmit and share large amount of data because of the growth of Information and Communication Technology. After a decade of long research CBIR technology is now beginning to move out of the laboratory and into the marketplace, in the form of commercial products like QBIC and Virage [3].

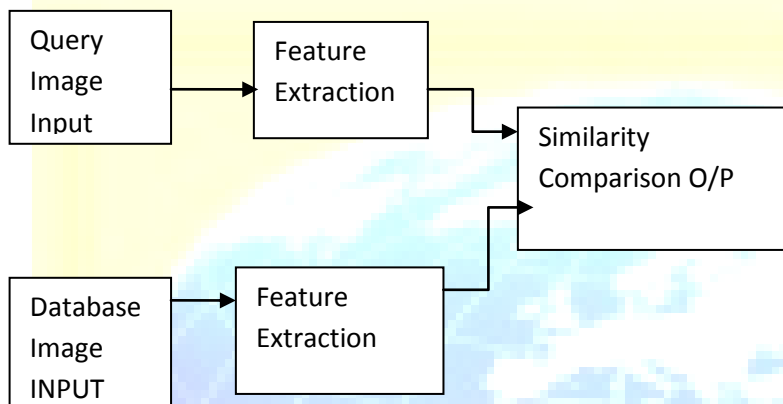


Figure 1: Block Diagram of CBIR

For the given a query image its feature vectors are computed. If the distance between features of the query image and images in the database is small, the corresponding image in the database is to be considered as a match to the query. The search is usually based on similarity rather than on exact match and the retrieval results are then ranked accordingly to a similarity index[6]. The CBIR is used to operate on the query image and then obtain the output relevant to that w.r.t the feature discussed in the paper.[11] The main component is feature extraction. In this paper the low level feature extraction is being done. In this paper we have discussed the texture features and the color and shape features[13]. The texture feature extraction is done using GLCM, histogram is used for color feature extraction and different shape features are extracted from the query image. From the output obtained, it is found that the combination of low level features provides the better results in image retrieval.

2. TEXTURE FEATURE EXTRACTION MODEL

Under this we have considered the Gray Level[20] Co- occurrence matrix(GLCM) for texture feature extraction.

2.1 GRAY LEVEL CO-OCCURRENCE MATRIX

Gray level co-occurrence matrix (GLCM), one of the most known texture analysis methods. It estimates image properties related to second order statistics. GLCM is created by calculating how often a pixel with gray-level (grayscale intensity) value i occurs horizontally adjacent to a pixel with the value j . Each element (i, j) in glcm specifies the number of times that the pixel with value i occurred horizontally adjacent to a pixel with value j . The features [10] obtained are Homogeneity, Contrast, Energy and Correlation as shown below:

CONTRAST returns a measure of the intensity contrast between a pixel and its neighbor over the whole image. Contrast is 0 for constant image.

CORRELATION returns a measure of how correlated a pixel is to its neighbor over the whole image. Correlation is 1 or -1 for a perfectly positively or negatively correlated image.

ENERGY returns the sum of the squared elements [16] It is 1 for constant image.

HOMOGENITY returns a value which measures the closeness of the distribution of elements in GLCM to GLCM diagonal.

3. COLOR FEATURE EXTRACTION MODEL

Under this we have histogram for color feature extraction in which the color histogram is used .

3.1 HISTOGRAM

Color is one of the most reliable visual features that are also easier to apply in image retrieval systems. Color is independent of image size and orientation, because, it is robust to background complication. Color histogram is the most common method for extracting the color features of colored images. Color histograms are widely used for CBIR systems in the image retrieval area. It is one of the most common methods for predicting the features of an image. [18]

The image histogram shows the variations of gray levels from 0 to 255, these all values cannot be used as a feature vector as the dimension is too big to be stored or compared. The image histogram must be sampled into the number of bins to reduce the dimensions of the feature vector. The sampling of the pixels into the optimal number of bins is necessary because very small bin width will represent the histogram in the form of spikes and will not contain much information which can be used and the large bin width will increase the frequencies in each bin and will not be able to distinguish between different types of objects in the image and thus the retrieval accuracy will decrease.

4. SHAPE FEATURE EXTRACTION

There are many techniques of shape description and recognition.[18] An overview of shape description techniques is given here. These techniques can be broadly categorized into two types, boundary based and region based. Boundary based methods use only the contour or the border of the shape of object and ignore its interior. Hence, these methods are also called external methods of shape extraction.. Recognition of a shape by its boundary is the process of comparing and identifying shapes by analyzing the shapes' boundaries but the local structural organization is always hard to describe. The features that are proposed in the paper are area, eccentricity, euler number and filled area.

Area: It is a scalar quantity. It is defined as the the actual number of pixels in the region

Perimeter: It is also a scalar quantity.

EulerNumber: This is also a scalar quantity. It is equal to the number of objects in the region minus the number of holes in those objects. This property is supported only for 2-D input label matrices [26] and Orientation which is also a scalar quantity.

5. SIMILARITY FEATURE EXTRACTION

The different feature extraction methods are explained above separately. The similarity feature which is used for comparing the various features is the Euclidean Distance. To retrieve the similarity images from the large image dataset, three types of Distance Metric Measures like Euclidean Distance, Chi-Square Distance and Weighted Euclidean but in the proposed method Euclidean distance is used.

Euclidean Distance: The formula of Euclidean distance is given by

$$\sum_{t=1}^n |x_i - y_i|^2$$

The minimum distance value signifies an exact match with the query. Euclidean distance is not always the best metric. The fact that the distances in each dimension are squared before summation, places great emphasis on those features for which the dissimilarity is large. Hence it is necessary to normalize the individual feature components before finding the distance between two images.

6. RESULTS AND DISCUSSIONS

The simulations were taken place in MATLAB7.10.0. For testing the proposed approach, the image database [19] containing different images, has been used. It has multiple copies of an image and also it has same images in arbitrary position and rotation. The query image is also one of the images in the databases. Our framework for CBIR is built in matlab. Test results for some

objects are shown in figures given below where only .retrieved images are shown for the query image on the right. The GLCM for texture is the better method as compared to that with gabor and wavelet. The methods used for calculating the output is precision, recall and accuracy.

The output obtained is as shown by using 3 parameters given below.

Precision-Recall graphs are a standard way to evaluate retrieval results for information retrieval systems, hence, we also use them in our research.

Precision = $\frac{\text{No. of relevant images retrieved}}{\text{Total no. of images retrieved}}$

Total no. of images retrieved

Recall = $\frac{\text{No. of relevant images retrieved}}{\text{Total no. of relevant images in the database}}$

Total no. of relevant images in the database

Accuracy = $\frac{\text{Precision} + \text{Recall}}{2}$

2

The results obtained for texture are as shown below. Similarly for color and shape are obtained and comparison is done with the reference paper.

Table 1 : Texture Results

Image No.	Precision	Precision (R)	Recall	Recall (R)
1	0.12	0.18	0.76	0.60
2	0.23	0.31	2.1	1.90
3	0.45	0.11	0.65	0.35
4	0.32	0.23	0.23	0.21
5	0.53	0.42	0.78	0.66
6	0.21	0.23	0.6	0.52
7	0.54	0.45	0.71	0.54
8	1.2	0.91	1.3	0.89
9	0.43	0.38	2.1	1.5

10	0.45	0.40	1.2	0.75
Avg	0.44	0.36	1.04	0.79

The results obtained above are calculated for texture feature extraction are shown in table no.1. where Precision(R) represents the reference paper output and Precision is the proposed method output. Similarly Recall (R) is the reference paper output and Recall is the proposed method output. The results are calculated for the method used for the proposed method i.e. Gray Level Co-occurrence Matrix(GLCM) and the previous method used in the reference paper[12]

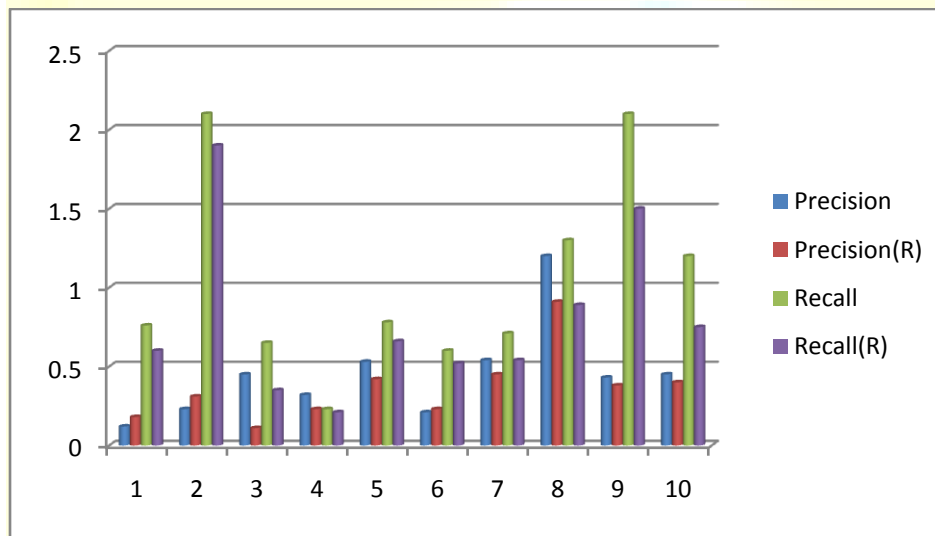


Fig 2 : Texture extraction

The complete evaluation results are shown below which show that the output obtained for the proposed method are better than that of reference method.

Table 2: Complete Results

	Texture	Texture(R)	Color	Color(R)
Avg. Precision	0.44	0.36	0.91	0.77
Avg. Recall	1.04	0.79	0.72	0.71
Avg.Accuracy	0.74	0.57	0.81	0.74

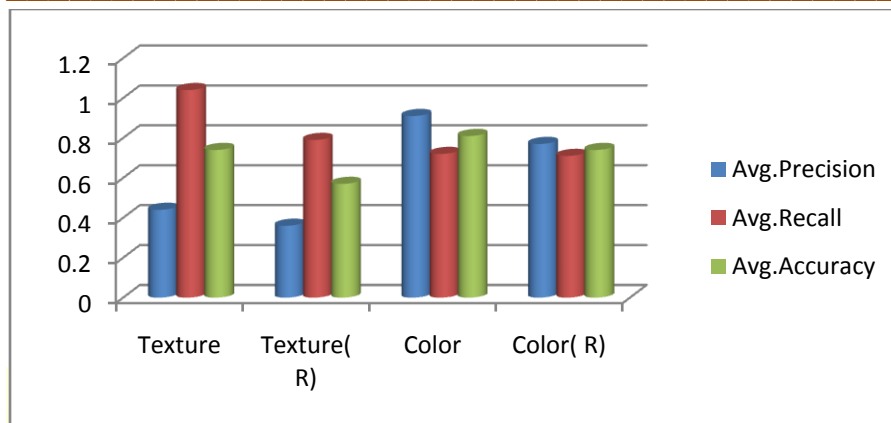


Fig 3: Complete Results

The results obtained above are calculated for complete feature extraction are shown in table no.2. where Texture(R) represents the reference paper output and Texture is the proposed method output. Similarly Color (R) is the reference paper output and color is the proposed method output. The results are calculated for the method used for the proposed method i.e. Gray Level Co-occurrence Matrix(GLCM) and the previous method used in the reference paper.

7. REFERENCES

- [1] Hoegner et.al [2012] “ An Enhancement on Content-Based Image Retrieval using Color and Texture Features”, *Journal of Emerging Trends in Computing and Information Sciences*, vol.3, no.4, pp.488-496 , 2012
- [2] Minal K. Pawar, Sunita S. Lokhande,V. N. Bapat, “ Iris Segmentation using Geodesic Active Contour for Improved Texture Extraction in Recognition”, *International Journal of Computer Applications*, vol.47, no.16,2012
- [3]D. Ashok Kumar, J Esther“Comparative Study on CBIR based by Color Histogram Gabor and Wavelet Transform” , *International Journal of Computer Applications*, vol.17 , no. 2, pp. 37-44, 2011
- [4] Kumari Puja ,Dr.Pravin Dakhole “Low-level Features Extraction of an Image for CBIR: Techniques and Trends” , *International Journal of Advances in Electronics Engineering* , vol.14 , no.4, pp. 37-44, 2011
- [5] PVN Reddy., Dr.S.K.Satya Prasad “Multiwavelet Based Texture Features for Content Based Image Retrieval”, *International Journal of Computer Science and Technologies* ,vol. 2, no.4, pp. 141-145, 2011
- [6]Rahul Mehta,Nishchol Mishra,Sanjeev Sharma “Color-Texture based Image Retrieval System” , *International Journal of Computer Applications* ,vol.24, no. 11, pp. 24-29, 2011

- [7] Saroj Shambharkar, Ms. Shubhangi C. Tirpude “Content Based Image Retrieval Using Texture and Color Extraction and Binary Tree Structure” *International Journal of Computer Technology and Electronics Engineering (IJCTEE)* ,vol.5, no.6, pp. 51-56, 2011
- [8] Abd. Rasid Mamat, Muhammad Suzuri Hitam, Md Yazid, Mohd Saman and Mohd Pouzi Hamzah(2011) “Content Based Image Retrieval: Comparison between Color Histogram, Average Color Component and Color Moment Techniques” *UMTAS* , vol. 6, no. 8, pp.7-14, 2011
- [9] Neetu Sharma, Paresh Rawat and Jaikaran Singh “Efficient CBIR Using Color Histogram Processing”, *International Journal of Signal and Image Processing*, vol. 2, no.4, pp. 94-112, 2011
- [10] Sagar Soman, Mitali Ghorpade, Vrushali Sonone, Satish Chavan “Content Based Image Retrieval Using Advanced Color and Texture Features”, *International Conference in Computational Intelligence (ICCIA)* vol.3, no.4, pp10-14, 2011
- [11] B.Chouhan & S.Shukla, “Comparative Analysis Of Robust Iris Recognition System Using Log Gabor Wavelet And Laplacian Of Gaussian Filter,” *International Journal of Computer Science & Communication (IJCSC)*, vol.2, No.1, pp. 239-242, 2011.
- [12] Ch.Kavitha, M.Babu Rao ,Dr. B.Prabhakara Rao, Dr. A.Govardhan, “Image Retrieval based on Local Histogram and Texture Features”, *International Journal of Computer Science and Information Technologies*, vol.2, no.2,2011
- [13] Dong Kwon Park, Yoon Seok Jeon, Chee Sun Won “Efficient Use of Local Edge Histogram Descriptor” , *International Journal of Advances in Electronics Engineering* , vol. 15 , no.3, pp. 37-44, 2011
- [14] Maenpaa Topi, Pietikainen Matti, Ojala Timo, “Texture Classification by Multi-Predicate Local Binary Pattern Operators”, *Journal of Emerging Trends in Computing and Information Sciences*, vol.3, no.4, pp.392-400 , 2010
- [15] Jianhua Wu, Zhaorong Wei ,Youli Chang “Color and Texture feature for Content Based Image Retrieval” *International Journal of Digital Content Technology and its Applications* ,vol.4, no. 3, pp. 23-35, 2010
- [16] Benedikt Fischer, André Brosig, Petra Welter, Christoph Groul, Rolf W. Günther, Thomas M. Deserno “Content-based Image Retrieval Applied to Bone Age Assessment” , *German Research Foundation*, vol.12, no.1, pp. 32-39, 2010
- [17] Venkat N Gudivada “Relevance Feedback in Content-Based Image Retrieval” , *International Journal of Computer Science and Engineering*, vol 3, no.1, 2010

- [18] Petra Welter, Thomas M. Deserno, Ralph Gülpersa, Berthold B. Wein, Christoph Grouls, Rolf W. Günther “ Exemplary Design of a DICOM Structured Report Template for CBIR Integration into Radiological Routine” *German Research Foundation*, vol.10,no.1, pp-119-121, 2010
- [19] Nidhi Singhai, S. K. Shandilya “A Survey on: Content Based Image Retrieval Systems”, *International Journal of Computer Applications*, vol. 4 ,no.4, pp. 22-26, 2010
- [20] Yihun Alemu, Jong-bin Koh, Muhammed Ikram, Dong-Kyoo Kim “Image Retrieval in Multimedia Databases: A Survey”, *Fifth International Conference on Intelligent Information Hiding and Multimedia Signal Processing, IEEE* ,vol. 4, no. 9, pp.681-689, 2009
- [21] Dubravko C' ulibrk, Borislav Anti'c, Vladimir, “Real-time Stable Texture Regions Extraction for Motion-Based Object Segmentation”, *BMVC* vol..23., no.17, pp.12-19, 2009
- [22] Jing Yi Tou, Yong Haur Tay, Phooi Yee Lau, “Recent trends in texture classification: a review”, *Symposium on Progress in Information & Communication Technology*, vol.3,no.2, pp.56-59, 2009
- [23] M. Jian, S. Chen, and J. Dong, “Illumination-Invariant Texture Classification Based on Self-Similarity and Gabor Wavelet,” *IITA*, vol2, no.22, pp.352-355, 2008.
- [24] T. Su, F. Kung, and Y. Kuo, “Application of Back- Propagation Neural Network Fuzzy Clustering in Textile Texture Automatic Recognition System,” *ICWAPR*, vol.3,no.3, pp. 46-49, 2008.
- [25] M. Liu, Y. Hou, X. Zhu, D. Yang, and X. Meng, “New Approach for Texture Classification Based on Concept,” *CISP*, vol.45,no.12, pp.160-164, 2008.
- [26] Huang, and S. Aviyente, “Wavelet Feature Selection for Image Classification,” *IEEE* , vol. 17, no. 9, pp. 1709-1720, 2008.
- [27] A.D. Lillo, G. Motta, J.A. Storer, “Multiresolution Rotation-Invariant Texture Classification Using Feature Extraction in the Frequency Domain and Vector Quantization,” *DCC*, vol11.,no.3. pp. 452-461, 2008
- [28] E.P. Lam, “Texture Classification Using Wavelet Decomposition,” *IEEE*, vol. 45,no.12. pp.35-41. 2008.
- [29] W.S.H.M. Wan Ahmad and M.F.A. Fauzi “Comparison of Different Feature Extraction Techniques in Content Based Image Retrieval for CT Brain Images”, *IEEE*, vol. 23, no10, pp. 503-508, 2008
- [30] Ryszard.S.Chora “Image Feature Extraction Techniques and Their Applications for CBIR and Biometrics Systems” *International Journal of Biology And Biomedical Engineering* ,vol.1, no.7, pp. 6-16, 2008